

PETTIBONE®

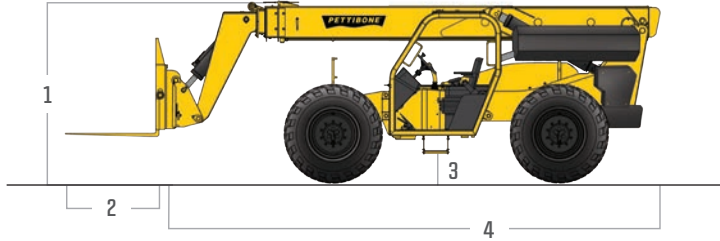
» EXTENDO 1144B

SPECIFICATIONS



The Pettibone® Extendo™ 1144B telehandler offers exceptional material handling capacity and maneuverability for a variety of applications. Providing excellent visibility from the cab, the 1144B allows operators to work safely and efficiently. Responsive hydraulics let users move loads with confidence, while superior engineering and service features maximize machine uptime.

SPECIFICATIONS



DIMENSIONS

1	Overall Height	7' 7.5" (232 cm) boom down
2	Fork Carriage	48" (122 cm) standard
3	Ground Clearance	18.8" (48 cm)
4	Overall Length	22' (671 cm) to fork frame
	Overall Width	8' 6" (259 cm)
	Pallet Forks	2.25 x 4 x 48" standard
	Total Operating Weight	27,150 lbs (12,315 kg)

ENGINE

Model/Power	117 HP (87 kW) Cummins® QSF3.8 Tier 4 turbo diesel with electronic control & protection and SCR aftertreatment
DEF Tank	5 gal. (19 L)
Fuel Tank	32.6 gal. (123 L)

HYDRAULICS

System	Pressure comp, axial piston
Features	Auxiliary boom tip hydraulics, quick disconnect for attachments
Controls	Single joystick, pilot operated

FEATURES & OPTIONS

OPERATOR CAB

Unmatched visibility Adjustable suspension seat with seat belt	Fully adjustable right-side armrest Full set of gauges for instant machine status
-------------------------------------------------------------------	--------------------------------------------------------------------------------------

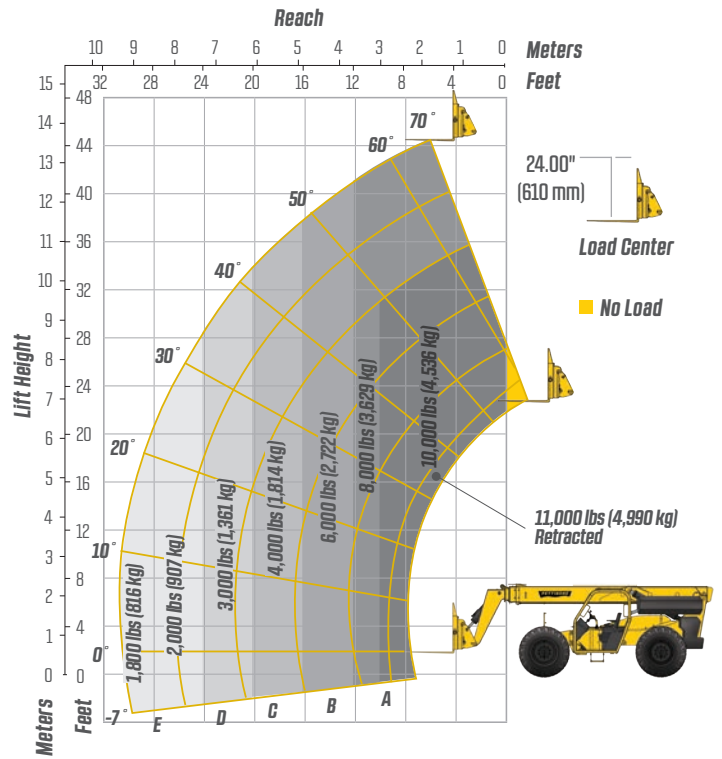
AVAILABLE ATTACHMENTS

Pallet, lumber and block forks Side tilt carriages +/- 10° Side-swing carriage	Truss boom Utility buckets
--------------------------------------------------------------------------------------	-------------------------------

OPTIONS

Light packages Foam-filled tires Solid tires	Enclosed cab (HWO) Air-conditioned cab Outriggers
----------------------------------------------------	---------------------------------------------------------

LIFT PERFORMANCE



PERFORMANCE

Max Load Capacity	11,000 lbs (4,990 kg)
Maximum Lift Height	44' 6" (1,356 cm)
Maximum Forward Reach	30' 3" (922 cm) at 24" LC
Below Grade Reach	3' 3" (99 cm)
Maximum Travel Speed	20 mph (32 km/h)
Turning Radius	12' 6" (381 cm)
Frame	24° of leveling (12° right and left); rear axle stabilization system; fits under 8' doorway
Transmission	Fully modulated Carraro® Powershift, 4-speed forward & reverse; parking brake engaged transmission declutch
Axles	Carraro outboard planetary; 4-wheel drive
Steering	4 wheel, 2 wheel and crab steer
Brakes	Oil-immersed inboard disc service brakes, integral park brake
Tires	14.00 x 24, 16 ply
Boom	Automatic fork leveling without slave cylinders; 2 wide stance, heavy-duty lift cylinders

* Specifications are subject to change.

PETTIBONE®

PETTIBONE, LLC

1100 Superior Avenue
Baraga, MI 49908

P: 800.467.3884
info@gopettibone.com
www.gopettibone.com

**1 - 2 - 3
WARRANTY**

1 Year	Full machine and attachment
2 Years	Powertrain and major hydraulic components
3 Years	Machine structure

WARRANTY