

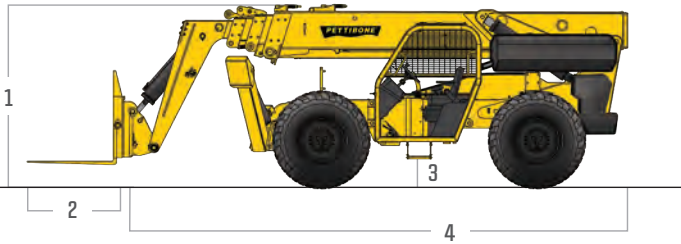
**PETTIBONE®**

» **EXTENDO 1157B**  
TIER 4 FINAL - SPECIFICATIONS



Featuring heavy-duty lift cylinders and other rugged components, the Pettibone® Extendo™ 1157b is designed to move loads on the toughest jobsites. Superior reach, lift capacity and maneuverability combine to make the 1157b one of the most productive telehandlers on the market. Furthermore, incredible visibility from the cab and a responsive hydraulics system allow operators to work safely and efficiently at all times.

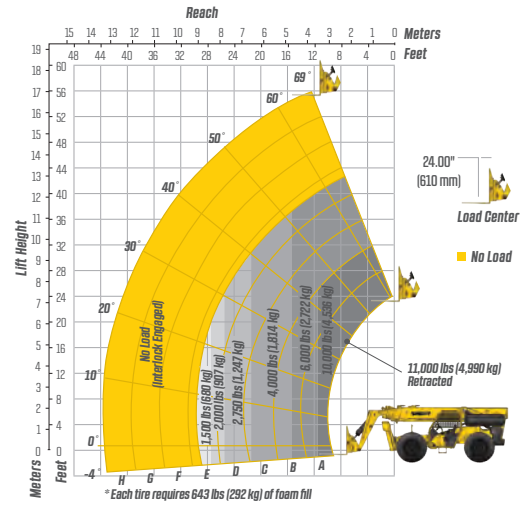
# SPECIFICATIONS



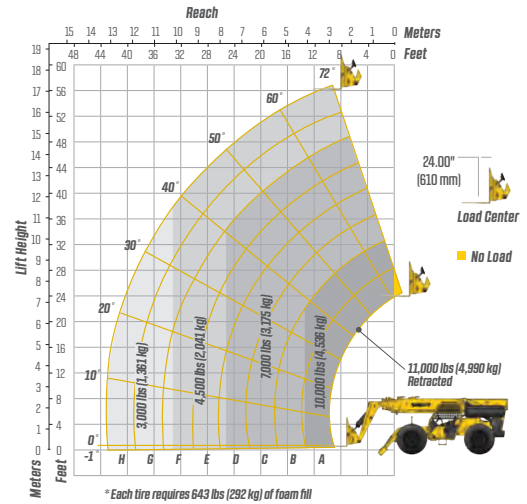
DIMENSIONS		
1	Overall Height	8' (244 cm) boom down
2	Fork Carriage	48" (122 cm) standard
3	Ground Clearance	18.8" (48 cm)
4	Overall Length	24' 5" (744 cm) to fork frame
	Overall Width	8' 6" (259 cm)
	Pallet Forks	2.25 x 4 x 48" standard
	Total Operating Weight	34,860 lbs (15,812 kg)
ENGINE		
	Model/Power	117 HP (87 kW) Cummins® QSF 3.8L Tier 4 turbo diesel with electronic control & protection
	DEF Tank	5 gal. (19 L)
	Fuel Tank	32.6 gal. (123 L)
HYDRAULICS		
	System	Pressure comp, axial piston
	Features	Auxiliary boom tip hydraulics, quick disconnect for attachments
	Controls	Single joystick, pilot operated
PERFORMANCE		
	Max Load Capacity	11,000 lbs (4,990 kg)
	Maximum Lift Height	57' (1,737 cm)
	Maximum Forward Reach	42' 1" (1,283 cm) at 24" LC
	Below Grade Reach	3' 11" (119 cm)
	Maximum Travel Speed	20 mph (32 km/h)
	Turning Radius	12' 6" (381 cm)
	Frame	24° of leveling (12° right and left); rear axle stabilization system; fits under 8' doorway, outriggers
	Transmission	Fully modulated Carraro® Powershift, 4-speed forward & reverse; parking brake engaged transmission declutch
	Axles	Carraro outboard planetary; 4-wheel drive
	Steering	4 wheel, 2 wheel and crab steer
	Brakes	Oil-immersed inboard disc service brakes, integral park brake
	Tires	14.00 x 24, 16 ply foam filled
	Boom	Automatic fork leveling without slave cylinders; 2 wide stance, heavy-duty lift cylinders

# LIFT PERFORMANCE

Standard Fork Frame



Standard Fork Frame (Outriggers Down)



# FEATURES & OPTIONS

OPERATOR CAB	
Unmatched visibility	Fully adjustable right-side armrest
Adjustable suspension seat with seat belt	Full set of gauges for instant machine status
AVAILABLE ATTACHMENTS	
Pallet, lumber and block forks	Truss boom
Side tilt carriages +/- 10°	Utility buckets
Side-swing carriage	
OPTIONS	
Light packages	Air-conditioned cab
Enclosed cab (HWD)	

\* Specifications are subject to change.



**PETTIBONE, LLC**  
 1100 Superior Avenue  
 Baraga, MI 49908  
 P: 800.467.3884  
 info@gopettibone.com  
 www.gopettibone.com



1 Year	Full machine and attachment
2 Years	Powertrain and major hydraulic components
3 Years	Machine structure

# WARRANTY