

**PETTIBONE®**

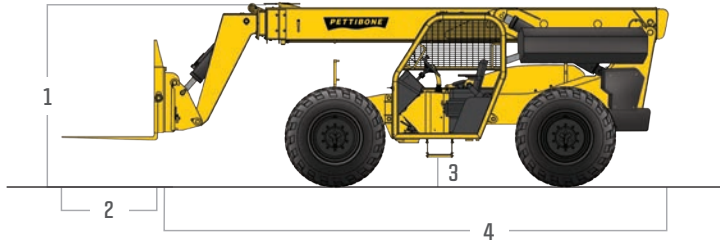
# » 944B EXTENDO

TIER 4 FINAL - SPECIFICATIONS



Combining high lift capacity with exceptional maneuverability, the Pettibone® Extendo™ 944B telehandler is ideal for challenging load handling applications. The 944B offers outstanding visibility from the cab, allowing operators to work safely and efficiently. Responsive hydraulics let users move loads with confidence, while superior engineering and service maximize uptime and consistently keep the machine working hard.

## SPECIFICATIONS



### DIMENSIONS

<b>1</b>	<b>Overall Height</b>	7' 7" (231 cm) boom down
<b>2</b>	<b>Fork Carriage</b>	48" (122 cm) standard
<b>3</b>	<b>Ground Clearance</b>	18" (46 cm)
<b>4</b>	<b>Overall Length</b>	22' (671 cm) to fork frame
	<b>Overall Width</b>	8' 6" (259 cm)
	<b>Pallet Forks</b>	2.25 x 4 x 48" standard
	<b>Approx. Operating Weight</b>	24,600 lbs (11,158 kg)

### ENGINE

<b>Model/Power</b>	117 HP (87 kW) Cummins® QSF3.8 Tier 4 turbo diesel with electronic control & protection and SCR aftertreatment
<b>DEF Tank</b>	5 gal. (19 L)
<b>Fuel Tank</b>	32.6 gal. (123 L)

### HYDRAULICS

<b>System</b>	Pressure comp, axial piston
<b>Features</b>	Auxiliary boom tip hydraulics, quick disconnect for attachments
<b>Controls</b>	Single joystick, pilot operated

## FEATURES & OPTIONS

### OPERATOR CAB

Unmatched visibility Adjustable suspension seat with seat belt	Fully adjustable right-side armrest Full set of gauges for instant machine status
-------------------------------------------------------------------	--------------------------------------------------------------------------------------

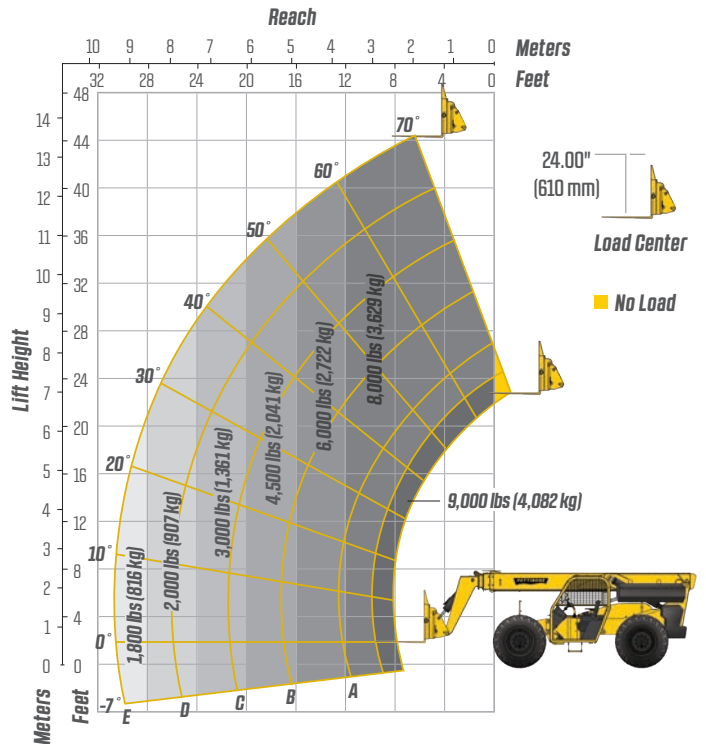
### AVAILABLE ATTACHMENTS

Pallet, lumber and block forks Side tilt carriages +/- 10° Side-swing carriage	Truss boom Utility buckets
--------------------------------------------------------------------------------------	-------------------------------

### OPTIONS

Light packages Foam-filled tires Solid tires	Enclosed cab (HWD) Air-conditioned cab Outriggers
----------------------------------------------------	---------------------------------------------------------

## LIFT PERFORMANCE



### PERFORMANCE

<b>Max Load Capacity</b>	9,000 lbs (4,082 kg)
<b>Maximum Lift Height</b>	44' 4" (1,351 cm)
<b>Maximum Forward Reach</b>	30' 3" (922 cm) at 24" LC
<b>Below Grade Reach</b>	3' 6" (107 cm)
<b>Maximum Travel Speed</b>	20 mph (32 km/h)
<b>Turning Radius</b>	12' 6" (381 cm)
<b>Frame</b>	24° of leveling (12° right and left); rear axle stabilization system; fits under 8' doorway
<b>Transmission</b>	Dana® T12000 Series, 3-speed Powershift, forward & reverse; Parking brake engaged transmission declutch
<b>Axles</b>	Dana 212 Series: Inboard Service, SAHR brakes, 4-wheel drive, 45% front limited slip differential
<b>Steering</b>	4 wheel, 2 wheel and crab steer
<b>Brakes</b>	Oil-immersed inboard disc service brakes, integral park brake
<b>Tires</b>	13.00 x 24, 16 ply
<b>Boom</b>	Automatic fork leveling without slave cylinders; 2 wide stance, heavy-duty lift cylinders

\* Specifications are subject to change.

**PETTIBONE®**

### PETTIBONE, LLC

1100 Superior Avenue  
Baraga, MI 49908

P: 800.467.3884  
info@gopettibone.com  
www.gopettibone.com

**1 - 2 - 3  
WARRANTY**

<b>1 Year</b>	Full machine and attachment
<b>2 Years</b>	Powertrain and major hydraulic components
<b>3 Years</b>	Machine structure

## WARRANTY