

# 890H

## WHEEL LOADER

### Engine

Cummins QSG12 Tier 4 Final

### Gross Power

370 hp (276 kW)

### Operating Weight

68,540 lb (31,089 kg)

### Bucket Size

7.1 yd<sup>3</sup> (5.5 m<sup>3</sup>)



TOUGH WORLD. TOUGH EQUIPMENT.



# 890H SPECIFICATIONS >>>

## ENGINE

|                      |                                       |
|----------------------|---------------------------------------|
| Emissions regulation | Tier 4 Final / Stage IV               |
| Make                 | Cummins                               |
| Model                | QSG12                                 |
| Max gross power      | 370 hp (276 kW) @ 2,100 rpm           |
| Max net power        | 352 hp (262 kW) @ 2,100 rpm           |
| Peak torque          | 1,248 lb-ft (1,693 N-m) @ 1,400 rpm   |
| Displacement         | 720 in³ (11.8 L)                      |
| Number of cylinders  | 6                                     |
| Aspiration           | Turbocharged & Air-to-air intercooled |

## TRANSMISSION STANDARD

|                           |                             |
|---------------------------|-----------------------------|
| Transmission type         | Countershaft, power shift   |
| Torque converter          | Single-stage, three-element |
| Maximum travel speed, fwd | 23.7 mph (38.1 km/h)        |
| Maximum travel speed, rev | 16.5 mph (26.5 km/h)        |
| Number of speeds, fwd     | 4                           |
| Number of speeds, rev     | 3                           |

## AXLES

|                         |                |
|-------------------------|----------------|
| Differential front type | Hydraulic lock |
| Differential rear type  | Conventional   |
| Axle oscillation        | ± 11°          |

## STEERING

|                        |                      |
|------------------------|----------------------|
| Steering configuration | Articulated          |
| Steering pressure      | 3,002 psi (20.7 MPa) |

## BRAKES

|                         |                                     |
|-------------------------|-------------------------------------|
| Service brake type      | Wet discs, two independent circuits |
| Service brake actuation | Hydraulic                           |
| Parking brake type      | Mechanical control                  |
| Parking brake actuation | Hydraulic                           |

## HYDRAULIC SYSTEM

|                  |                    |
|------------------|--------------------|
| Main pump type   | Piston             |
| System pressure  | 3,771 psi (26 MPa) |
| Raise            | 6.0 s              |
| Dump time        | 1.6 s              |
| Float down time  | 3.4 s              |
| Total cycle time | 11.0 s             |

## LOADER ARM PERFORMANCE WITH ATTACHMENT

|   |                        |
|---|------------------------|
| Tipping load - straight                 | 52,642 lb (23,878 kg)  |
| Tipping load - full turn                | 45,415 lb (20,600 kg)  |
| Bucket breakout force                   | 55,078 lbf (245 kN)    |
| Maximum hinge pin height                | 15 ft 0 in (4,572 mm)  |
| Dump clearance at full height discharge | 10 ft 11 in (3,330 mm) |
| Dump reach at full height discharge     | 4 ft 10 in (1,479 mm)  |
| Maximum digging depth, bucket level     | 6 in (142 mm)          |
| Bucket rollback at ground level         | 45°                    |
| Bucket rollback at carry                | 49°                    |
| Bucket rollback at maximum height       | 62°                    |
| Maximum dump angle at full height       | 45°                    |

## BUCKET PERFORMANCE

|                 |                  |
|-----------------|------------------|
| Bucket capacity | 7.1 yd³ (5.5 m³) |
|-----------------|------------------|

## DIMENSIONS

|                                 |                       |
|---------------------------------|-----------------------|
| Ground clearance                | 18 in (476 mm)        |
| Wheelbase                       | 12 ft 2 in (3,700 mm) |
| Cab height                      | 12 ft 4 in (3,765 mm) |
| Wheel tread                     | 7 ft 11 in (2,420 mm) |
| Width over tires                | 10 ft 5 in (3,170 mm) |
| Length with bucket down         | 30 ft 8 in (9,352 mm) |
| Turn angle, either side         | 38°                   |
| Rear angle of departure         | 25°                   |
| Turning radius, bucket carry    | 25 ft 4 in (7,725 mm) |
| Turning radius, outside of tire | 23 ft 0 in (7,011 mm) |
| Width over bucket               | 11 ft 4 in (3,440 mm) |

## TIRES

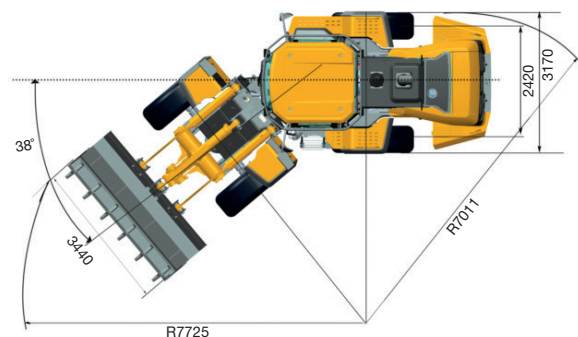
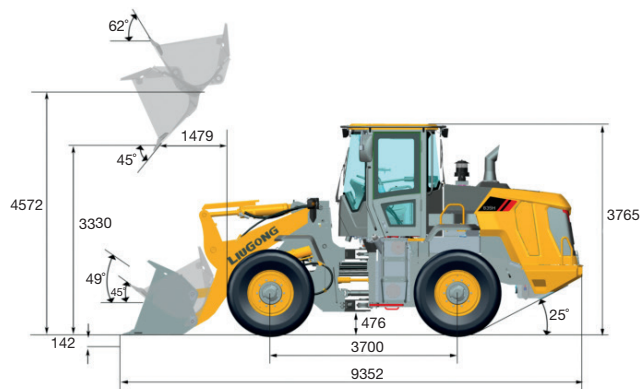
|           |                 |
|-----------|-----------------|
| Tire size | 29.5R25 L3 tire |
|-----------|-----------------|

## OPERATING WEIGHTS

|                  |                       |
|------------------|-----------------------|
| Operating weight | 68,540 lb (31,089 kg) |
|------------------|-----------------------|

## SERVICE CAPACITY

|                  |                   |
|------------------|-------------------|
| Fuel tank        | 128.1 gal (485 L) |
| Engine oil       | 9.2 gal (35 L)    |
| Cooling system   | 11.8 gal (45 L)   |
| Hydraulic system | 67.3 gal (255 L)  |
| Transmission     | 13.2 gal (50 L)   |
| Axles, each      | 17.1 gal (65 L)   |
| DEF tank         | 13.2 gal (50 L)   |



LiuGong Construction Machinery N.A., LLC

22220 Merchants Way, Suite 100, Katy, Texas 77449

T: (281) 579-8882 F: (281) 579-8388

www.liugongna.com

Specifications and designs are subject to change without notice. Machines shown may include optional equipment.

03/2019 Designed by LiuGong